

Phospho-BTK (Tyr223) Antibody



PACO24084

Product Information

Size:

100ul

Reactivity:

Human, Mouse, Rat

Source:

Rabbit

Isotype:

IgG

Applications:

ELISA, WB

Recommended dilutions:

ELISA:1:2000-1:10000, WB:1:500-1:1000

Protein Background:**Gene ID:**

BTK

Uniprot

Q06187

Synonyms:

AGMX1; ATK; kinase Btk; BPK;

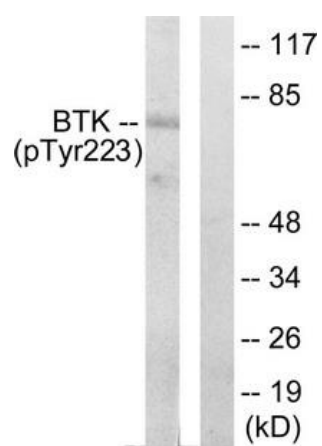
Immunogen:

Peptide sequence around phosphorylation site of tyrosine 223 (A-L-Y(p)-D-Y) derived from Human BTK.

Storage:

Rabbit IgG in phosphate buffered saline (without Mg²⁺ and Ca²⁺), pH 7.4, 150mM NaCl, 0.02% sodium azide and 50% glycerol.

Product Images



Western blot analysis of extracts from HeLa cells treated with serum using BTK (phospho-Tyr223) Antibody. The lane on the right is treated with the antigen-specific peptide.