

**Phospho-FOXO1/FOXO3/FOXO4 (Thr24/32)
Antibody
PACO24086**



Product Information

Size:

100ul

Reactivity:

Human, Mouse, Rat

Source:

Rabbit

Isotype:

IgG

Applications:

ELISA, WB

Recommended dilutions:

ELISA:1:2000-1:10000, WB:1:500-1:1000

Protein Background:

Gene ID:

FOXO1/FOXO3/FOXO4

Uniprot

Q12778/O43524/P98177

Synonyms:

FKHR; FOXO1; FKHR2; AFX; MLLT7

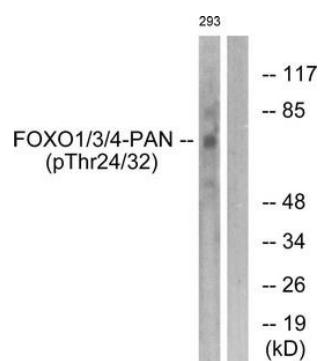
Immunogen:

Peptide sequence around phosphorylation site of threonine 24/32(S-C-T(p)-W-P) derived from Human FOXO1/3/4-pan.

Storage:

Rabbit IgG in phosphate buffered saline (without Mg²⁺ and Ca²⁺), pH 7.4, 150mM NaCl, 0.02% sodium azide and 50% glycerol.

Product Images



Western blot analysis of extracts from 293 cells treated with Serum using FOXO1/3/4-pan (Phospho-Thr24/32) Antibody. The lane on the right is treated with the antigen-specific peptide.