

Phospho-FCGR2B (Tyr292) Antibody



PACO24088

Product Information

Size:

100ul

Reactivity:

Human

Source:

Rabbit

Isotype:

IgG

Applications:

ELISA, WB

Recommended dilutions:

ELISA:1:2000-1:10000, WB:1:500-1:1000

Protein Background:**Gene ID:**

FCGR2B

Uniprot

P31994

Synonyms:

CD32; FCG2; FCG2B, ; LY-17; CDW32

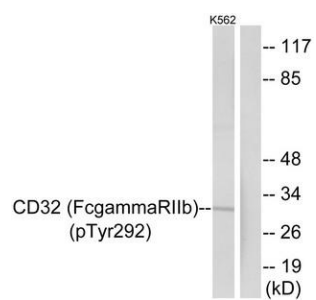
Immunogen:

Peptide sequence around phosphorylation site of tyrosine 292 (I-T-Y(p)-S-L) derived from Human CD32.

Storage:

Rabbit IgG in phosphate buffered saline (without Mg²⁺ and Ca²⁺), pH 7.4, 150mM NaCl, 0.02% sodium azide and 50% glycerol.

Product Images



Western blot analysis of extracts from K562 cells treated with PMA using CD32 (Phospho-Tyr292) Antibody. The lane on the right is treated with the antigen-specific peptide.