

Phospho-Pim1 (Tyr309) Antibody



PACO24089

Product Information

Size:

100ul

Reactivity:

Human, Mouse, Rat

Source:

Rabbit

Isotype:

IgG

Applications:

ELISA, WB

Recommended dilutions:

ELISA:1:2000-1:10000, WB:1:500-1:1000

Protein Background:**Gene ID:**

Pim1

Uniprot

P06803

Synonyms:

PIM-1; Proto-oncogene serine/threonine-protein kinase pim-1; EC 2.7.11.1;

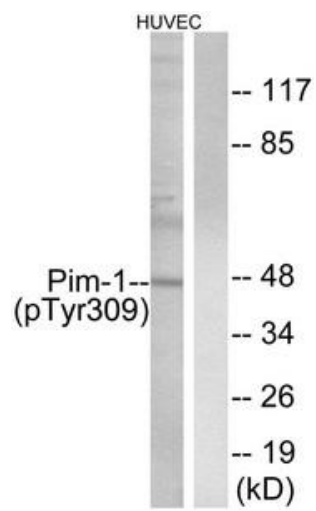
Immunogen:

Peptide sequence around phosphorylation site of tyrosine 309(A-A-V(p)-W-S) derived from Human Pim-1.

Storage:

Rabbit IgG in phosphate buffered saline (without Mg²⁺ and Ca²⁺), pH 7.4, 150mM NaCl, 0.02% sodium azide and 50% glycerol.

Product Images



Western blot analysis of extracts from HUVEC cells treated with PMA using Pim-1 (Phospho-Tyr309) Antibody. The lane on the right is treated with the antigen-specific peptide.