

Phospho-RASGRF1 (Ser916) Antibody



PACO24090

Product Information

Size:

100ul

Reactivity:

Mouse, Rat

Source:

Rabbit

Isotype:

IgG

Applications:

ELISA, IHC

Recommended dilutions:

ELISA:1:2000-1:10000, IHC:1:50-1:100

Protein Background:**Gene ID:**

RASGRF1

Uniprot

Q13972

Synonyms:

CDC25; GNRP; GRF1; RASGRF1;

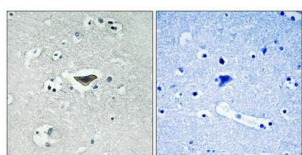
Immunogen:

Peptide sequence around phosphorylation site of Serine 916(N-E-G(p)-T P) derived from Human Ras-GRF1.

Storage:

Rabbit IgG in phosphate buffered saline (without Mg²⁺ and Ca²⁺), pH 7.4, 150mM NaCl, 0.02% sodium azide and 50% glycerol.

Product Images



Immunohistochemical analysis of paraffin-embedded human brain tissue using Ras-GRF1 (Phospho-Ser916) antibody (left) or the same antibody preincubated with blocking peptide (right).