

Phospho-PRKAR2B (Ser113) Antibody



PACO24094

Product Information

Size:

100ul

Reactivity:

Human, Mouse, Rat

Source:

Rabbit

Isotype:

IgG

Applications:

ELISA, WB

Recommended dilutions:

ELISA:1:2000-1:10000, WB:1:500-1:1000

Protein Background:**Gene ID:**

PRKAR2B

Uniprot

P31323

Synonyms:

KAP3; PRKAR2B; PKA R2-beta;

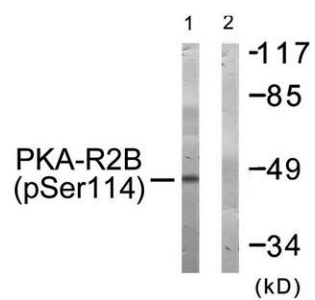
Immunogen:

Peptide sequence around phosphorylation site of Serine113(R-R-A(p)-S-V) derived from Human PKA-R2 β .

Storage:

Rabbit IgG in phosphate buffered saline (without Mg²⁺ and Ca²⁺), pH 7.4, 150mM NaCl, 0.02% sodium azide and 50% glycerol.

Product Images



Western blot analysis of extracts from COS-7 cells treated with PMA using PKA-R2 beta (Phospho-Ser114) Antibody. The lane on the right is treated with the antigen-specific peptide.