

# Phospho-MDM2 (Ser186/Ser188) Antibody



PACO24098

---

## Product Information

**Size:**

100ul

**Reactivity:**

Human

**Source:**

Rabbit

**Isotype:**

IgG

**Applications:**

ELISA, IF

**Recommended dilutions:**

ELISA:1:2000-1:10000, IF:1:100-1:200

**Protein Background:****Gene ID:**

MDM2

**Uniprot**

Q00987

**Synonyms:**

Oncoprotein Mdm2; p53-binding protein Mdm2; Ubiquitin-protein ligase E3 Mdm2;

**Immunogen:**

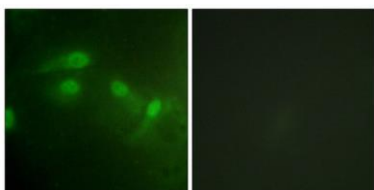
Peptide sequence around phosphorylation site of Ser186/Ser188(H-K-S(p)-D-S(p)-I-S) derived from Human MDM2.

**Storage:**

Rabbit IgG in phosphate buffered saline (without Mg<sup>2+</sup> and Ca<sup>2+</sup>), pH 7.4, 150mM NaCl, 0.02% sodium azide and 50% glycerol.

## Product Images

---



Immunofluorescence staining of methanol-fixed HeLa cells using MDM2 (Phospho-Ser186/Ser188) Antibody.