

Phospho-MAPT (Ser202) Antibody



PACO24105

Product Information

Size:

100ul

Reactivity:

Human, Mouse, Rat

Source:

Rabbit

Isotype:

IgG

Applications:

ELISA, WB

Recommended dilutions:

ELISA:1:2000-1:10000, WB:1:500-1:1000

Protein Background:**Gene ID:**

MAPT

Uniprot

P10636

Synonyms:

MAPT; MTBT1; PHF-tau;

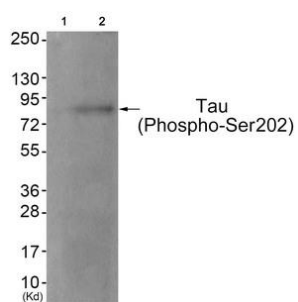
Immunogen:

Peptide sequence around phosphorylation site of serine 202(P-G-S(p)-P-G) derived from Human Tau.

Storage:

Rabbit IgG in phosphate buffered saline (without Mg²⁺ and Ca²⁺), pH 7.4, 150mM NaCl, 0.02% sodium azide and 50% glycerol.

Product Images



Western blot analysis of extracts from JK cells (Lane 2), using Tau (Phospho-Ser202) Antibody. The lane on the left is treated with antigen-specific peptide.