

# Phospho-EPHA3 (Tyr779/833) Antibody



PACO24109

---

## Product Information

**Size:**

100ul

**Reactivity:**

Human, Mouse, Rat

**Source:**

Rabbit

**Isotype:**

IgG

**Applications:**

ELISA, IHC

**Recommended dilutions:**

ELISA:1:2000-1:10000, IHC:1:50-1:100

**Protein Background:****Gene ID:**

EPHA3

**Uniprot**

P29320/54764/54756

**Synonyms:**

EPA3; ETK; HEK; MEK4; REK

**Immunogen:**

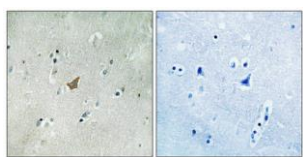
Peptide sequence around phosphorylation site of tyrosine 779/833 (E-A-Y(p)-T-T)/(Q-D-V(p)-I-K) derived from Human EPHA3/4/5.

**Storage:**

Rabbit IgG in phosphate buffered saline (without Mg<sup>2+</sup> and Ca<sup>2+</sup>), pH 7.4, 150mM NaCl, 0.02% sodium azide and 50% glycerol.

## Product Images

---



Immunohistochemical analysis of paraffin-embedded human brain tissue using EPHA3/4/5 (Phospho-Tyr779/833) antibody (left) or the same antibody preincubated with blocking peptide (right).