

Phospho-LATS1/LATS2 (Thr1079/1041) Antibody



PACO24114

Product Information

Size:

100ul

Reactivity:

Human, Mouse

Source:

Rabbit

Isotype:

IgG

Applications:

ELISA, IHC

Recommended dilutions:

ELISA:1:2000-1:10000, IHC:1:50-1:100

Protein Background:**Gene ID:**

LATS1/LATS2

Uniprot

O95835/Q9NRM7

Synonyms:

WARTS; Large tumor suppressor 1; EC 2.7.11.1;

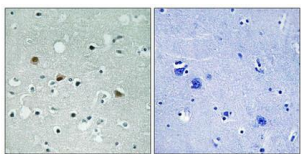
Immunogen:

Peptide sequence around phosphorylation site of threonine 1079/1041 (E-F-T(p)-F-R) derived from Human LATS1/2.

Storage:

Rabbit IgG in phosphate buffered saline (without Mg²⁺ and Ca²⁺), pH 7.4, 150mM NaCl, 0.02% sodium azide and 50% glycerol.

Product Images



Immunohistochemical analysis of paraffin-embedded human brain tissue using LATS1/2 (Phospho-Thr1079/1041) antibody (left) or the same antibody preincubated with blocking peptide (right).