

Phospho-MAP3K8 (Ser400) Antibody



PACO24115

Product Information

Size:

100ul

Reactivity:

Human, Mouse, Rat

Source:

Rabbit

Isotype:

IgG

Applications:

ELISA, IHC

Recommended dilutions:

ELISA:1:2000-1:10000, IHC:1:50-1:100

Protein Background:**Gene ID:**

MAP3K8

Uniprot

P41279

Synonyms:

C-COT; ; M3K8; MAP3K8; TPL2;

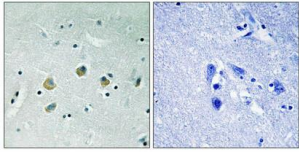
Immunogen:

Peptide sequence around phosphorylation site of Serine 400(C-Q-S(p)-L-D) derived from HumanMAP3K8.

Storage:

Rabbit IgG in phosphate buffered saline (without Mg²⁺ and Ca²⁺), pH 7.4, 150mM NaCl, 0.02% sodium azide and 50% glycerol.

Product Images



Immunohistochemical analysis of paraffin-embedded human brain tissue using MAP3K8 (Phospho-Ser400) antibody (left) or the same antibody preincubated with blocking peptide (right).