

**Phospho-RPS6KA1/RPS6KA3/RPS6KA2/RPS6KA6  
(Ser221/227/S218/232) Antibody  
PACO24121**



---

**Product Information**

**Size:**

100ul

**Reactivity:**

Human, Mouse

**Source:**

Rabbit

**Isotype:**

IgG

**Applications:**

ELISA, WB

**Recommended dilutions:**

ELISA:1:2000-1:10000, WB:1:500-1:1000

**Protein Background:**

**Gene ID:**

RPS6KA1/RPS6KA3/RPS6KA2/RPS6KA6

**Uniprot**

Q15418/P51812/Q15349/Q9UK32

**Synonyms:**

KS6A1; KS6AA; MAPKAP-K1a; RSK1;

**Immunogen:**

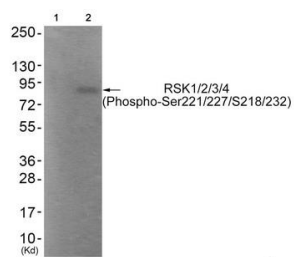
Peptide sequence around phosphorylation site of Serine 221/227/218/232(A-Y-S(p)-F-C) derived from Human RSK1/2/3/4.

**Storage:**

Rabbit IgG in phosphate buffered saline (without Mg<sup>2+</sup> and Ca<sup>2+</sup>), pH 7.4, 150mM NaCl, 0.02% sodium azide and 50% glycerol.

## Product Images

---



Western blot analysis of extracts from HepG2 cells (Lane 2), using RSK1/2/3/4 (Phospho-Ser221/227/218/232) Antibody. The lane on the left is treated with antigen-specific peptide.