

Phospho-CBX3 (Ser93) Antibody



PACO24131

Product Information

Size:

100ul

Reactivity:

Human, Mouse, Rat

Source:

Rabbit

Isotype:

IgG

Applications:

ELISA, WB

Recommended dilutions:

ELISA:1:2000-1:10000, WB:1:500-1:1000

Protein Background:**Gene ID:**

CBX3

Uniprot

Q13185

Synonyms:

HECH; HP1 gamma; HP1Hs-gamma; chromobox 3;

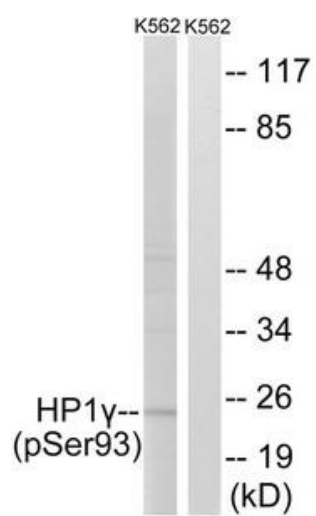
Immunogen:

Peptide sequence around phosphorylation site of Serine 93(R-L-S(p)-L-S) derived from Human HP1 γ .

Storage:

Rabbit IgG in phosphate buffered saline (without Mg²⁺ and Ca²⁺), pH 7.4, 150mM NaCl, 0.02% sodium azide and 50% glycerol.

Product Images



Western blot analysis of extracts from K562 cells treated with forskolin using HP1 gamma (Phospho-Ser93) Antibody. The lane on the right is treated with the antigen-specific peptide.