

# Phospho-FGFR1/FGFR2 (Tyr463/466) Antibody



PACO24133

---

## Product Information

**Size:**

100ul

**Reactivity:**

Human, Mouse

**Source:**

Rabbit

**Isotype:**

IgG

**Applications:**

ELISA, WB

**Recommended dilutions:**

ELISA:1:2000-1:10000, WB:1:500-1:1000

**Protein Background:****Gene ID:**

FGFR1/FGFR2

**Uniprot**

P11362/P21802

**Synonyms:**

BFGFR; CEK; FLG; CD331; FLT2

**Immunogen:**

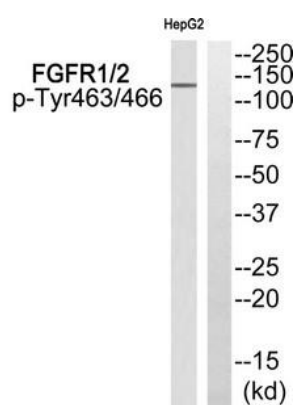
Peptide sequence around phosphorylation site of tyrosine 463/466(S-E-Y(p)-E-L) derived from Human FGFR1/2.

**Storage:**

Rabbit IgG in phosphate buffered saline (without Mg<sup>2+</sup> and Ca<sup>2+</sup>), pH 7.4, 150mM NaCl, 0.02% sodium azide and 50% glycerol.

## Product Images

---



Western blot analysis of extracts from HepG2 cells using FGFR1/2 (Phospho-Tyr463/466) Antibody. The lane on the right is treated with the antigen-specific peptide.