

Phospho-CBX5 (Ser92) Antibody



PACO24136

Product Information

Size:

100ul

Reactivity:

Human

Source:

Rabbit

Isotype:

IgG

Applications:

ELISA, IHC

Recommended dilutions:

ELISA:1:2000-1:10000, IHC:1:50-1:100

Protein Background:**Gene ID:**

CBX5

Uniprot

P45973

Synonyms:

HP1A; HP1 alpha; antigen p25;

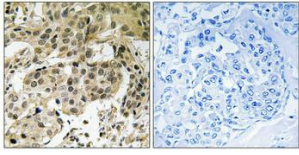
Immunogen:

Peptide sequence around phosphorylation site of Serine 92(R-S-S(p)-N-F) derived from Human HP1 α .

Storage:

Rabbit IgG in phosphate buffered saline (without Mg²⁺ and Ca²⁺), pH 7.4, 150mM NaCl, 0.02% sodium azide and 50% glycerol.

Product Images



Immunohistochemical analysis of paraffin-embedded human breast carcinoma tissue using HP1alpha (Phospho-Ser92) antibody (left) or the same antibody preincubated with blocking peptide (right).