

Phospho-ATF2 (Ser472) Antibody



PACO24142

Product Information

Size:

100ul

Reactivity:

Human, Mouse, Rat

Source:

Rabbit

Isotype:

IgG

Applications:

ELISA, IHC

Recommended dilutions:

ELISA:1:2000-1:10000, IHC:1:50-1:100

Protein Background:**Gene ID:**

ATF2

Uniprot

P15336

Synonyms:

Activating 2; ATF2; cAMP response element binding protein CRE- BP1; CREB2; HB16

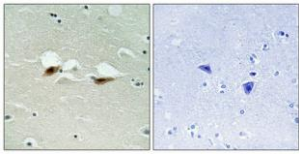
Immunogen:

Peptide sequence around phosphorylation site of Serine 472 (E-A-V(p)-A-T) derived from Human ATF-2.

Storage:

Rabbit IgG in phosphate buffered saline (without Mg²⁺ and Ca²⁺), pH 7.4, 150mM NaCl, 0.02% sodium azide and 50% glycerol.

Product Images



Immunohistochemical analysis of paraffin-embedded human brain tissue using ATF-2 (Phospho-Ser472) antibody (left) or the same antibody preincubated with blocking peptide (right).