

Phospho-CEBPA (Thr230) Antibody



PACO24145

Product Information

Size:

100ul

Reactivity:

Human, Mouse, Rat

Source:

Rabbit

Isotype:

IgG

Applications:

ELISA, WB

Recommended dilutions:

ELISA:1:2000-1:10000, WB:1:500-1:1000

Protein Background:**Gene ID:**

CEBPA

Uniprot

P49715

Synonyms:

CCAAT/enhancer-binding protein alpha C/EBP alpha CEBPA;

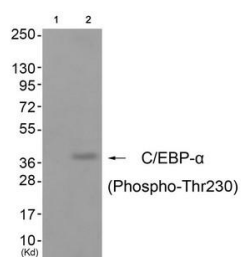
Immunogen:

Peptide sequence around phosphorylation site of threonine 230 (P-P-T(p)-P-V) derived from Human C/EBP- α .

Storage:

Rabbit IgG in phosphate buffered saline (without Mg²⁺ and Ca²⁺), pH 7.4, 150mM NaCl, 0.02% sodium azide and 50% glycerol.

Product Images



Western blot analysis of extracts from cos-7 cells (Lane 2), using C/EBP-alpha (Phospho-Thr230) Antibody. The lane on the left is treated with antigen-specific peptide.