

Phospho-TCF3 (Thr355) Antibody



PACO24151

Product Information

Size:

100ul

Reactivity:

Human, Mouse, Rat

Source:

Rabbit

Isotype:

IgG

Applications:

ELISA, IHC

Recommended dilutions:

ELISA:1:2000-1:10000, IHC:1:50-1:100

Protein Background:**Gene ID:**

TCF3

Uniprot

P15923

Synonyms:

E12; Tran; TCF3; TFE2; ITF1

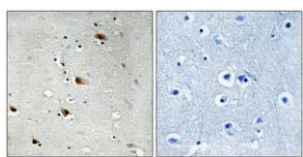
Immunogen:

Peptide sequence around phosphorylation site of threonine 355 (P-S-T(p)-P-V) derived from Human E2A.

Storage:

Rabbit IgG in phosphate buffered saline (without Mg²⁺ and Ca²⁺), pH 7.4, 150mM NaCl, 0.02% sodium azide and 50% glycerol.

Product Images



Immunohistochemical analysis of paraffin-embedded human brain tissue using E2A (Phospho-Thr355) antibody (left) or the same antibody preincubated with blocking peptide (right).