

# Phospho-CCDC88A (Ser1417) Antibody



PACO24154

---

## Product Information

**Size:**

100ul

**Reactivity:**

Human, Mouse

**Source:**

Rabbit

**Isotype:**

IgG

**Applications:**

ELISA, IHC

**Recommended dilutions:**

ELISA:1:2000-1:10000, IHC:1:50-1:100

**Protein Background:****Gene ID:**

CCDC88A

**Uniprot**

Q3V6T2

**Synonyms:**

APE; GIV; GRDN; HkRP1; KIAA1212

**Immunogen:**

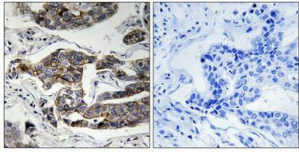
Peptide sequence around phosphorylation site of Serine 417(L-E-M(p)-A-Q) derived from Human Girdin.

**Storage:**

Rabbit IgG in phosphate buffered saline (without Mg<sup>2+</sup> and Ca<sup>2+</sup>), pH 7.4, 150mM NaCl, 0.02% sodium azide and 50% glycerol.

## Product Images

---



Immunohistochemical analysis of paraffin-embedded human breast carcinoma tissue using Girdin (Phospho-Ser1417) antibody (left) or the same antibody preincubated with blocking peptide (right).