

Phospho-KAT5 (Ser90) Antibody



PACO24160

Product Information

Size:

100ul

Reactivity:

Human, Mouse, Rat

Source:

Rabbit

Isotype:

IgG

Applications:

ELISA, IHC

Recommended dilutions:

ELISA:1:2000-1:10000, IHC:1:50-1:100

Protein Background:**Gene ID:**

KAT5

Uniprot

Q92993

Synonyms:

HTATIP; TI60; Tat-interactive protein-60;

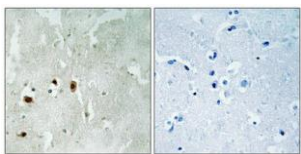
Immunogen:

Peptide sequence around phosphorylation site of Serine 90(P-G-S(p)-P-E) derived from Human Tip60.

Storage:

Rabbit IgG in phosphate buffered saline (without Mg²⁺ and Ca²⁺), pH 7.4, 150mM NaCl, 0.02% sodium azide and 50% glycerol.

Product Images



Immunohistochemical analysis of paraffin-embedded human brain tissue using Tip60 (Phospho-Ser90) antibody (left) or the same antibody preincubated with blocking peptide (right).