

# Phospho-HCLS1 (Tyr397) Antibody



PACO24161

---

## Product Information

**Size:**

100ul

**Reactivity:**

Human

**Source:**

Rabbit

**Isotype:**

IgG

**Applications:**

ELISA, WB

**Recommended dilutions:**

ELISA:1:2000-1:10000, WB:1:500-1:1000

**Protein Background:****Gene ID:**

HCLS1

**Uniprot**

P14317

**Synonyms:**

HCLS1; LCKBP1; Hematopoietic cell- specific LYN substrate 1;

**Immunogen:**

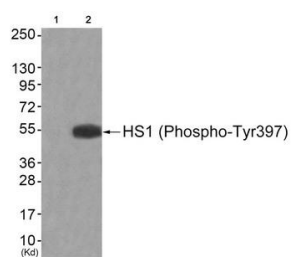
Peptide sequence around phosphorylation site of tyrosine 397(G-D-Y(p)-E-E) derived from Human HS1.

**Storage:**

Rabbit IgG in phosphate buffered saline (without Mg<sup>2+</sup> and Ca<sup>2+</sup>), pH 7.4, 150mM NaCl, 0.02% sodium azide and 50% glycerol.

## Product Images

---



Western blot analysis of extracts from JK cells (Lane 2), using HS1 (Phospho-Tyr397) Antibody. The lane on the left is treated with antigen-specific peptide.