

Phospho-HDAC7 (Ser155) Antibody



PACO24166

Product Information

Size:

100ul

Reactivity:

Human, Mouse

Source:

Rabbit

Isotype:

IgG

Applications:

ELISA, WB

Recommended dilutions:

ELISA:1:2000-1:10000, WB:1:500-1:1000

Protein Background:**Gene ID:**

HDAC7

Uniprot

Q8WUI4

Synonyms:

HD7a; HDA7; HDAC7A;

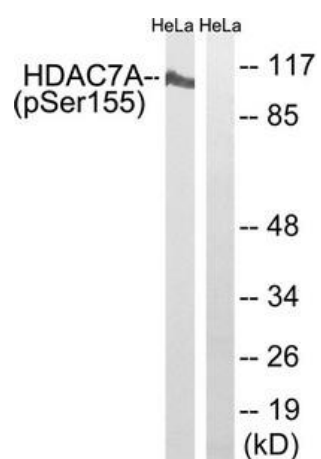
Immunogen:

Peptide sequence around phosphorylation site of Serine 155(T-V-S(p)-E-P) derived from Human HDAC7A.

Storage:

Rabbit IgG in phosphate buffered saline (without Mg²⁺ and Ca²⁺), pH 7.4, 150mM NaCl, 0.02% sodium azide and 50% glycerol.

Product Images



Western blot analysis of extracts from HeLa cells using HDAC7A (Phospho-Ser155) Antibody. The lane on the right is treated with the antigen-specific peptide.