

# Phospho-ITGB1 (Tyr795) Antibody



PACO24167

---

## Product Information

**Size:**

100ul

**Reactivity:**

Human, Mouse, Rat

**Source:**

Rabbit

**Isotype:**

IgG

**Applications:**

ELISA, WB

**Recommended dilutions:**

ELISA:1:2000-1:10000, WB:1:500-1:1000

**Protein Background:****Gene ID:**

ITGB1

**Uniprot**

P05556

**Synonyms:**

CD29; FNRB; ITB1;

**Immunogen:**

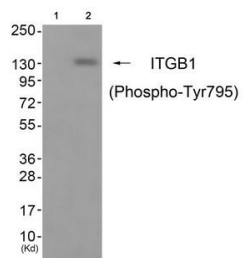
Peptide sequence around phosphorylation site of tyrosine 795(P-K-Y(p)-E-G) derived from Human ITGB1.

**Storage:**

Rabbit IgG in phosphate buffered saline (without Mg<sup>2+</sup> and Ca<sup>2+</sup>), pH 7.4, 150mM NaCl, 0.02% sodium azide and 50% glycerol.

## Product Images

---



Western blot analysis of extracts from cos-7 cells (Lane 2), using ITGB1 (Phospho-Tyr795) Antibody. The lane on the left is treated with antigen-specific peptide.