

Phospho-RAF1 (Ser642) Antibody



PACO24169

Product Information

Size:

100ul

Reactivity:

Human, Mouse, Rat

Source:

Rabbit

Isotype:

IgG

Applications:

ELISA, WB

Recommended dilutions:

ELISA:1:2000-1:10000, WB:1:500-1:1000

Protein Background:**Gene ID:**

RAF1

Uniprot

P04049

Synonyms:

C-RAF; C-Raf; CRAF; RAF-1;

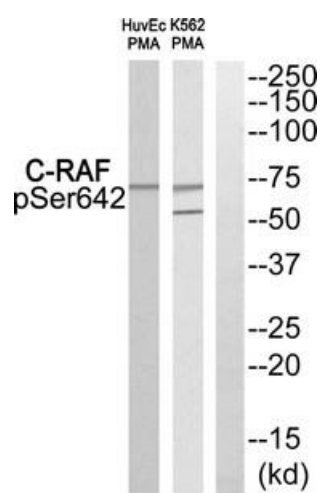
Immunogen:

Peptide sequence around phosphorylation site of Serine 642(T-T-S(p)-P-R) derived from Human C-RAF.

Storage:

Rabbit IgG in phosphate buffered saline (without Mg²⁺ and Ca²⁺), pH 7.4, 150mM NaCl, 0.02% sodium azide and 50% glycerol.

Product Images



Western blot analysis of extracts from HuvEc cells and K562 cells treated with PMA using C-RAF (Phospho-Ser642) Antibody. The lane on the right is treated with the antigen-specific peptide.