

**Phospho-
TUBA1A/TUBA1B/TUBA1C/TUBA3C/TUBA3E/TUB
A4A (Tyr272) Antibody
PACO24172**



Product Information

Size:

100ul

Reactivity:

Human, Mouse, Rat

Source:

Rabbit

Isotype:

IgG

Applications:

ELISA, WB

Recommended dilutions:

ELISA:1:2000-1:10000, WB:1:500-1:1000

Protein Background:

Gene ID:

TUBA1A/TUBA1B/TUBA1C/TUBA3C/TUBA3E

Uniprot

Q71U36/P68363/Q9BQE3/Q13748/Q6PEY2/P6

Synonyms:

TBA1; TBA1A; TBA4A; TUBA1;

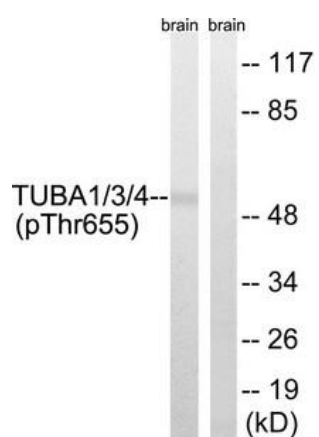
Immunogen:

Peptide sequence around phosphorylation site of tyrosine 272 (A-T-Y(p)-A-P) derived from Human TUBA1/3/4.

Storage:

Rabbit IgG in phosphate buffered saline (without Mg²⁺ and Ca²⁺), pH 7.4, 150mM NaCl, 0.02% sodium azide and 50% glycerol.

Product Images



Western blot analysis of extracts from Rat brain cells using TUBA1/3/4 (Phospho-Tyr272) Antibody. The lane on the right is treated with the antigen-specific peptide.