

Phospho-CSF1R (Tyr708) Antibody



PACO24175

Product Information

Size:

100ul

Reactivity:

Human, Mouse, Rat

Source:

Rabbit

Isotype:

IgG

Applications:

ELISA, WB

Recommended dilutions:

ELISA:1:2000-1:10000, WB:1:500-1:1000

Protein Background:**Gene ID:**

CSF1R

Uniprot

P07333

Synonyms:

C-FMS; CD115; CSF1R; FIM2; FMS

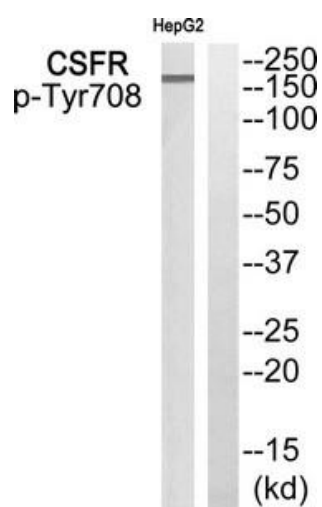
Immunogen:

Peptide sequence around phosphorylation site of tyrosine 708 (K-K-Y(p)-V-R) derived from Human CSFR.

Storage:

Rabbit IgG in phosphate buffered saline (without Mg²⁺ and Ca²⁺), pH 7.4, 150mM NaCl, 0.02% sodium azide and 50% glycerol.

Product Images



Western blot analysis of extracts from HepG2 cells using CSFR (Phospho-Tyr708) Antibody. The lane on the right is treated with the antigen-specific peptide.