

Phospho-EPHA2/EPHA5 (Tyr594) Antibody



PACO24176

Product Information

Size:

100ul

Reactivity:

Human, Mouse

Source:

Rabbit

Isotype:

IgG

Applications:

ELISA, WB

Recommended dilutions:

ELISA:1:2000-1:10000, WB:1:500-1:1000

Protein Background:**Gene ID:**

EPHA2/EPHA5

Uniprot

P29317/P54756

Synonyms:

ARCC2; ECK; EPHA2;

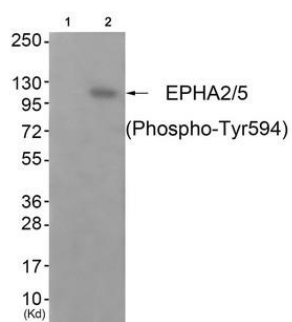
Immunogen:

Peptide sequence around phosphorylation site of tyrosine 594 (H-T-Y(p)-E-D) derived from Human EPHA2/5.

Storage:

Rabbit IgG in phosphate buffered saline (without Mg²⁺ and Ca²⁺), pH 7.4, 150mM NaCl, 0.02% sodium azide and 50% glycerol.

Product Images



Western blot analysis of extracts from JK cells (Lane 2), using EPHA2/5 (Phospho-Tyr594) Antibody. The lane on the left is treated with antigen-specific peptide.