

Phospho-DPYSL2 (Ser522) Antibody



PACO24183

Product Information

Size:

100ul

Reactivity:

Human, Mouse, Rat

Source:

Rabbit

Isotype:

IgG

Applications:

ELISA, WB

Recommended dilutions:

ELISA:1:2000-1:10000, WB:1:500-1:1000

Protein Background:**Gene ID:**

DPYSL2

Uniprot

Q16555

Synonyms:

CRMP2; DPYL2; DRP2; ULIP-2;

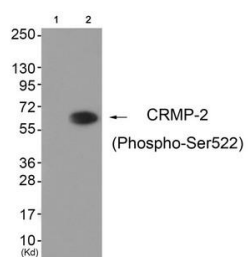
Immunogen:

Peptide sequence around phosphorylation site of Serine 522(K-T-S(p)-P-A) derived from Human CRMP-2.

Storage:

Rabbit IgG in phosphate buffered saline (without Mg²⁺ and Ca²⁺), pH 7.4, 150mM NaCl, 0.02% sodium azide and 50% glycerol.

Product Images



Western blot analysis of extracts from HuvEc cells (Lane 2), using CRMP-2 (Phospho-Ser522) Antibody. The lane on the left is treated with antigen-specific peptide.