

# Phospho-PHB (Thr258) Antibody



PACO24185

---

## Product Information

**Size:**

100ul

**Reactivity:**

Human, Mouse, Rat

**Source:**

Rabbit

**Isotype:**

IgG

**Applications:**

ELISA, WB

**Recommended dilutions:**

ELISA:1:2000-1:10000, WB:1:500-1:1000

**Protein Background:****Gene ID:**

PHB

**Uniprot**

P35232

**Synonyms:**

Prohibitin; PHB1

**Immunogen:**

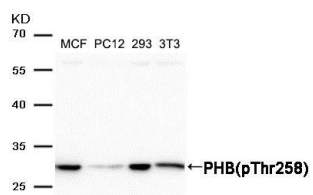
Peptide sequence around phosphorylation site of threonine 258 (N-I-T(p)-Y-L) derived from Human PHB.

**Storage:**

Supplied at 1.0mg/mL in phosphate buffered saline (without Mg<sup>2+</sup> and Ca<sup>2+</sup>), pH 7.4, 150mM NaCl, 0.02% sodium azide and 50% glycerol.

## Product Images

---



Western blot analysis of extracts from MCF, PC12, 293 and 3T3 cells using PHB (Phospho-Thr258) Antibody.