

Phospho-CD40 (Thr254) Antibody



PACO24194

Product Information

Size:

100ul

Reactivity:

Human, Mouse

Source:

Rabbit

Isotype:

IgG

Applications:

ELISA, WB

Recommended dilutions:

ELISA:1:2000-1:10000, WB:1:500-1:3000

Protein Background:

Receptor for TNFSF5/CD40LG. Transduces TRAF6- and MAP3K8-mediated signals that activate ERK in macrophages and B cells, leading to induction of immunoglobulin secretion.

Gene ID:

CD40

Uniprot

P25942

Synonyms:

B-cell surface antigen CD40; Bp50; CD40 antigen; CD40L receptor; CDw40; TNFR5; tumor necrosis factor receptor superfamily member 5

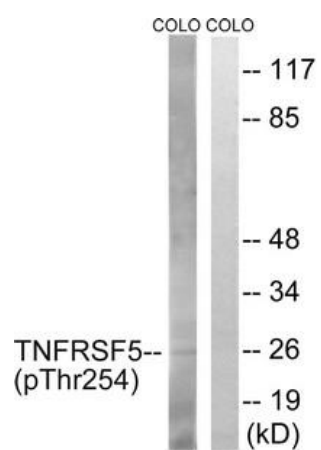
Immunogen:

Peptide sequence around phosphorylation site of threonine 254 (Q-E-T(p)-L-H) derived from Human TNFRSF5.

Storage:

Rabbit IgG in phosphate buffered saline (without Mg²⁺ and Ca²⁺), pH 7.4, 150mM NaCl, 0.02% sodium azide and 50% glycerol.

Product Images



Western blot analysis of extracts from COLO cells, treated with Insulin (0.01U/ml, 15mins), using TNFRSF5 (Phospho-Thr254) antibody. The lane on the right is treated with the synthesized peptide.