

Phospho-CREB1 (Thr100) Antibody



PACO24202

Product Information

Size:

100ul

Reactivity:

Human, Mouse, Rat

Source:

Rabbit

Isotype:

IgG

Applications:

ELISA, WB

Recommended dilutions:

ELISA:1:2000-1:10000, WB:1:500-1:3000

Protein Background:

Phosphorylation-dependent transcription factor that stimulates transcription upon binding to the DNA cAMP response element (CRE), a sequence present in many viral and cellular promoters. Transcription activation is enhanced by the TORC coactivators which act independently of Ser-133 phosphorylation. Involved in different cellular processes including the synchronization of circadian rhythmicity and the differentiation of adipose cells.

Gene ID:

CREB1

Uniprot

P16220

Synonyms:

cAMP responsive element binding protein 1; cAMP-response element binding protein; CREB-1; CREB1

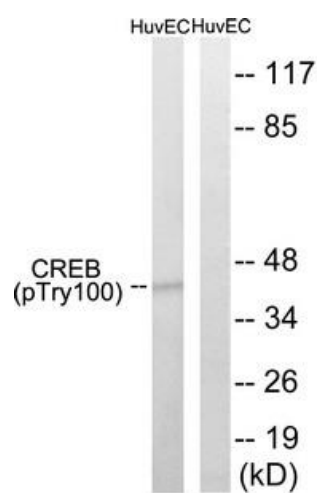
Immunogen:

Peptide sequence around phosphorylation site of threonine 100 (S-G-T(p)-Q-I) derived from Human CREB.

Storage:

Rabbit IgG in phosphate buffered saline (without Mg²⁺ and Ca²⁺), pH 7.4, 150mM NaCl, 0.02% sodium azide and 50% glycerol.

Product Images



Western blot analysis of extracts from HUVEC cells, treated with etoposide (25uM, 24hours), using CREB (Phospho-Thr100) antibody. The lane on the right is treated with the synthesized peptide.