

Phospho-NOS3 (Ser615) Antibody



PACO24205

Product Information

Size:

100ul

Reactivity:

Human, Mouse, Rat

Source:

Rabbit

Isotype:

IgG

Applications:

ELISA, WB

Recommended dilutions:

ELISA:1:2000-1:10000, WB:1:500-1:3000

Protein Background:

Produces nitric oxide (NO) which is implicated in vascular smooth muscle relaxation through a cGMP-mediated signal transduction pathway. NO mediates vascular endothelial growth factor (VEGF)-induced angiogenesis in coronary vessels and promotes blood clotting through the activation of platelets. Isoform eNOS13C: Lacks eNOS activity, dominant-negative form that may down-regulate eNOS activity by forming heterodimers with isoform 1.

Gene ID:

NOS3

Uniprot

P29474

Synonyms:

Constitutive NOS; EC 1.14.13.39; EC-NOS; ECNOS; Endothelial NOS; NOS; type III; NOS3; NOSIII; Nitric-oxide synthase; endothelial; cNOS

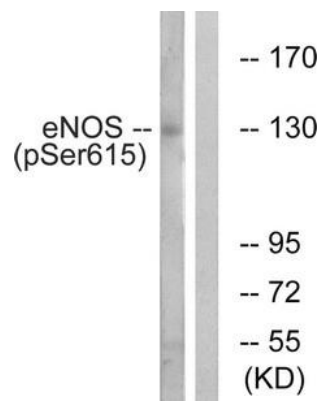
Immunogen:

Peptide sequence around phosphorylation site of serine 615 (F-N-S(p)-I-S) derived from Human eNOS.

Storage:

Rabbit IgG in phosphate buffered saline (without Mg²⁺ and Ca²⁺), pH 7.4, 150mM NaCl, 0.02% sodium azide and 50% glycerol.

Product Images



Western blot analysis of extracts from K562 cells, treated with EGF (40nM, 30mins), using eNOS (Phospho-Ser615) antibody. The lane on the right is treated with the synthesized peptide.