

# Phospho-IFNAR1 (Ser535/Ser539) Antibody



PACO24221

---

## Product Information

**Size:**

100ul

**Reactivity:**

Human

**Source:**

Rabbit

**Isotype:**

IgG

**Applications:**

ELISA, WB

**Recommended dilutions:**

ELISA:1:2000-1:10000, WB:1:500-1:1000

**Protein Background:****Gene ID:**

IFNAR1

**Uniprot**

P17181

**Synonyms:**

AVP, IFRC, IFNAR, IFNBR, IFN-alpha-REC

**Immunogen:**

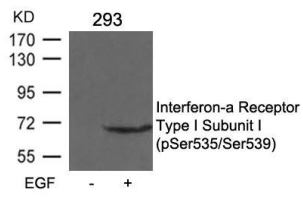
Peptide sequence around phosphorylation site of serine 535 or serine 539 (D-S(p)-G-N-Y-S(p)-N) derived from Human Interferon- $\alpha$  Receptor Type I Subunit I.

**Storage:**

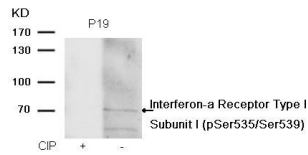
Purified Rabbit polyclonal in PBS(pH 7.4) containing with 0.02% sodium azide and 50% glycerol.

## Product Images

---



Western blot analysis of extracts from 293 cells untreated or treated with EGF using Interferon- $\alpha$  Receptor Type I Subunit I (phospho-Ser535/Ser539) Antibody.



Western blot analysis of extracts from P19 cells, treated with calf intestinal phosphatase (CIP), using Interferon- $\alpha$  Receptor Type I Subunit I (phospho-Ser535/Ser539) Antibody.