

Phospho-RAF1 (Ser259) Antibody



PACO24223

Product Information

Size:

100ul

Reactivity:

Human, Mouse, Rat

Source:

Rabbit

Isotype:

IgG

Applications:

ELISA, WB, IHC

Recommended dilutions:

ELISA:1:2000-1:10000, WB:1:500-1:1000,
IHC:1:50-1:100

Protein Background:**Gene ID:**

RAF1

Uniprot

P04049

Synonyms:

C-RAF; C-Raf; CRAF

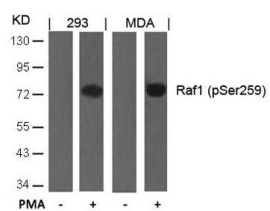
Immunogen:

Peptide sequence around phosphorylation site of serine 259 (S-T-S(p)-T-P) derived from Human Raf1.

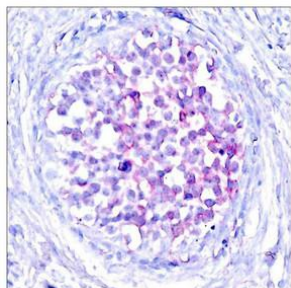
Storage:

Supplied at 1.0mg/mL in phosphate buffered saline (without Mg²⁺ and Ca²⁺), pH 7.4, 150mM NaCl, 0.02% sodium azide and 50% glycerol.

Product Images



Western blot analysis of extracts from 293 and MDA cells untreated or treated with PMA using Raf1(Phospho-Ser259) Antibody.



Immunohistochemical analysis of paraffin-embedded human breast carcinoma tissue using Raf1(Phospho-Ser259) Antibody.