

Phospho-ICAM1 (Tyr512) Antibody



PACO24253

Product Information

Size:

100ul

Reactivity:

Human

Source:

Rabbit

Isotype:

IgG

Applications:

ELISA, WB

Recommended dilutions:

ELISA:1:2000-1:10000, WB:1:500-1:1000

Protein Background:**Gene ID:**

ICAM1

Uniprot

P05362

Synonyms:

ICA1; ICAM1;

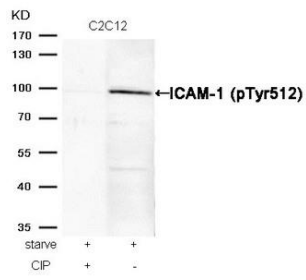
Immunogen:

Peptide sequence around phosphorylation site of tyrosine 512 (K-K-Y(p)-R-L) derived from Human ICAM-1.

Storage:

Supplied at 1.0mg/mL in phosphate buffered saline (without Mg²⁺ and Ca²⁺), pH 7.4, 150mM NaCl, 0.02% sodium azide and 50% glycerol.

Product Images



Western blot analysis of extracts from C2C12 cells, treated with starve or calf intestinal phosphatase (CIP), using ICAM-1 (Phospho-Tyr512) Antibody.