

Phospho-IGF1R (Tyr1165/Tyr1166) Antibody



PACO24255

Product Information

Size:

100ul

Reactivity:

Human, Mouse, Rat

Source:

Rabbit

Isotype:

IgG

Applications:

ELISA, WB, IF

Recommended dilutions:

ELISA:1:2000-1:10000, WB:1:500-1:1000,
IF:1:100-1:200

Protein Background:

This receptor binds insulin-like growth factor 1 (IGF1) with a high affinity and IGF2 with a lower affinity. It has a tyrosine-protein kinase activity, which is necessary for the activation of the IGF1-stimulated downstream signaling cascade. When present in a hybrid receptor with INSR, binds IGF1.

Gene ID:

IGF1R

Uniprot

P08069

Synonyms:

Insulin-like growth factor I receptor; CD221; IGF1R; kinase IGF1R;

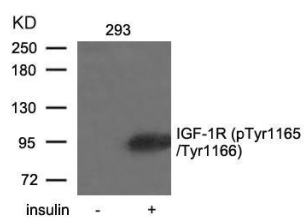
Immunogen:

Peptide sequence around phosphorylation site of tyrosine 1165/tyrosine 1166 (T-D-Y(p)-Y(p)-R-K) derived from Human IGF-1R.

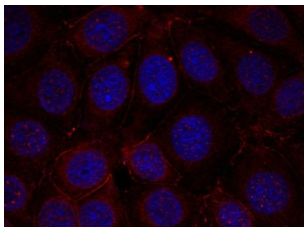
Storage:

Supplied at 1.0mg/mL in phosphate buffered saline (without Mg²⁺ and Ca²⁺), pH 7.4, 150mM NaCl, 0.02% sodium azide and 50% glycerol.

Product Images



Western blot analysis of extracts from 293 cells untreated or treated with insulin using IGF-1R(Phospho-Tyr1165/Tyr1166) Antibody.



Immunofluorescence staining of methanol-fixed MCF cells using IGF-1R(Phospho-Tyr1165/Tyr1166) Antibody.