

Phospho-RPS6KA1 (Ser352) Antibody



PACO24266

Product Information

Size:

100ul

Reactivity:

Human, Mouse, Rat

Source:

Rabbit

Isotype:

IgG

Applications:

ELISA, WB

Recommended dilutions:

ELISA:1:2000-1:10000, WB:1:500-1:1000

Protein Background:**Gene ID:**

RPS6KA1

Uniprot

Q15418

Synonyms:

KS6A1; MAPKAP-K1a; RPS6KA1; RSK-1; RSK1

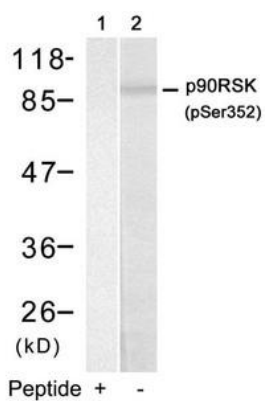
Immunogen:

Peptide sequence around phosphorylation site of serine 352 (R-D-S(p)-P-G) derived from Human p90RSK.

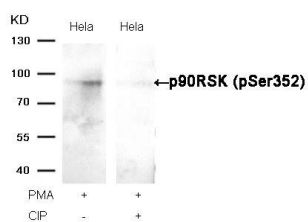
Storage:

Supplied at 1.0mg/mL in phosphate buffered saline (without Mg²⁺ and Ca²⁺), pH 7.4, 150mM NaCl, 0.02% sodium azide and 50% glycerol.

Product Images



Western blot analysis of extracts from HUVEC cells using p90RSK(Phospho-Ser352) Antibody(Lane 2) and the same antibody preincubated with blocking peptide(Lane1).



Western blot analysis of extracts from HeLa cells, treated with PMA or calf intestinal phosphatase (CIP), using p90RSK (Phospho-Ser352) Antibody.