

Phospho-AR (Ser650) Antibody



PACO24269

Product Information

Size:

100ul

Reactivity:

Human, Mouse

Source:

Rabbit

Isotype:

IgG

Applications:

ELISA, WB, IHC

Recommended dilutions:

ELISA:1:2000-1:10000, WB:1:500-1:1000,
IHC:1:50-1:100

Protein Background:**Gene ID:**

AR

Uniprot

P10275

Synonyms:

ANDR; DHTR; AR

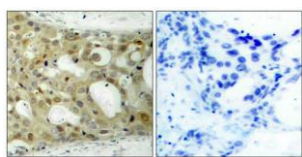
Immunogen:

Peptide sequence around phosphorylation site of serine 650 (T-T-S(p)-P-T) derived from Human Androgen Receptor.

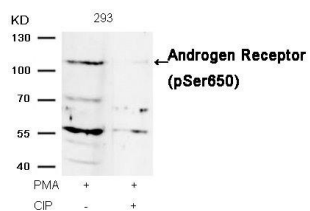
Storage:

Supplied at 1.0mg/mL in phosphate buffered saline (without Mg²⁺ and Ca²⁺), pH 7.4, 150mM NaCl, 0.02% sodium azide and 50% glycerol.

Product Images



Immunohistochemical analysis of paraffin-embedded human breast carcinoma tissue using Androgen Receptor (Phospho-Ser650) Antibody (left) or the same antibody preincubated with blocking peptide (right).



Western blot analysis of extracts from 293 cells, treated with PMA or calf intestinal phosphatase (CIP), using Androgen Receptor (Phospho-Ser650) Antibody.