

Phospho-CHEK1 (Ser280) Antibody



PACO24277

Product Information

Size:

100ul

Reactivity:

Human

Source:

Rabbit

Isotype:

IgG

Applications:

ELISA, WB

Recommended dilutions:

ELISA:1:2000-1:10000, WB:1:500-1:1000

Protein Background:**Gene ID:**

CHEK1

Uniprot

O14757

Synonyms:

CHEK1; Chk1;

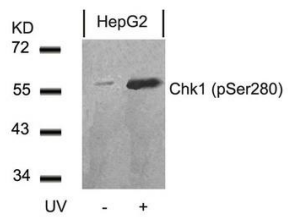
Immunogen:

Peptide sequence around phosphorylation site of serine 280 (V-T-S(p)-G-G) derived from Human Chk1.

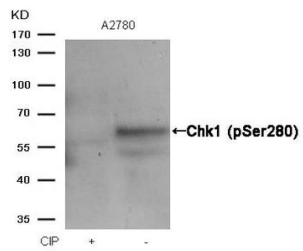
Storage:

Supplied at 1.0mg/mL in phosphate buffered saline (without Mg²⁺ and Ca²⁺), pH 7.4, 150mM NaCl, 0.02% sodium azide and 50% glycerol.

Product Images



Western blot analysis of extracts from HepG2 cells untreated or treated with UV using Chk1(Phospho-Ser280) Antibody.



Western blot analysis of extracts from A2780 cells, treated with calf intestinal phosphatase (CIP), using Chk1 (Phospho-Ser280) Antibody.