

# Phospho-GRIN2B (Tyr1474) Antibody



PACO24285

---

## Product Information

**Size:**

100ul

**Reactivity:**

Human, Mouse, Rat

**Source:**

Rabbit

**Isotype:**

IgG

**Applications:**

ELISA, WB, IF

**Recommended dilutions:**

ELISA:1:2000-1:10000, WB:1:500-1:1000,  
IF:1:100-1:200

**Protein Background:****Gene ID:**

GRIN2B

**Uniprot**

Q13224

**Synonyms:**

GRIN2B; NMDE2; NME2; NR2B; NR3

**Immunogen:**

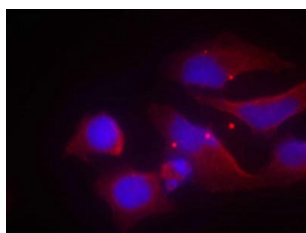
Peptide sequence around phosphorylation site of Tyr1474 (H-V-Y(p)-E-K) derived from Human NMDAR2B.

**Storage:**

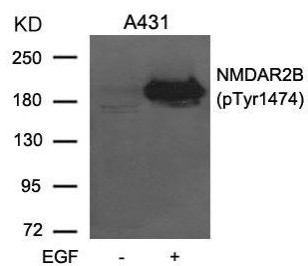
Supplied at 1.0mg/mL in phosphate buffered saline (without Mg<sup>2+</sup> and Ca<sup>2+</sup>), pH 7.4, 150mM NaCl, 0.02% sodium azide and 50% glycerol.

## Product Images

---



Immunofluorescence staining of methanol-fixed HeLa cells using NMDAR2B(phospho-Tyr1474) antibody.



Western blot analysis of extracts from A431 cells untreated or treated with EGF using NMDAR2B (phospho-Tyr1474) Antibody.