

Phospho-APP (Thr668) Antibody



PACO24292

Product Information

Size:

100ul

Reactivity:

Human, Mouse, Rat

Source:

Rabbit

Isotype:

IgG

Applications:

ELISA, WB

Recommended dilutions:

ELISA:1:2000-1:10000, WB:1:500-1:1000

Protein Background:**Gene ID:**

APP

Uniprot

P05067

Synonyms:

AAA; AD1; PN2; ABPP; APPI

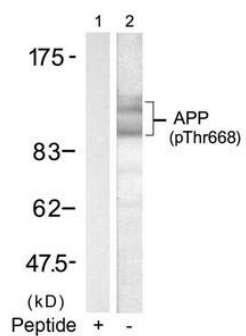
Immunogen:

Peptide sequence around phosphorylation site of threonine 668 (A-V-T(p)-P-E) derived from Human APP.

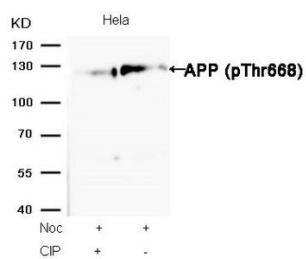
Storage:

Supplied at 1.0mg/mL in phosphate buffered saline (without Mg²⁺ and Ca²⁺), pH 7.4, 150mM NaCl, 0.02% sodium azide and 50% glycerol.

Product Images



Western blot analysis of extracts from mouse brain tissue using APP(Phospho-668) Antibody(Lane 2) and the same antibody preincubated with blocking peptide(Lane1).



Western blot analysis of extracts from HeLa cells, treated with Noc or calf intestinal phosphatase (CIP), using APP (Phospho-Thr668) Antibody.