

Phospho-HSP90AB1 (Ser254) Antibody



PACO24294

Product Information

Size:

100ul

Reactivity:

Human, Mouse, Rat

Source:

Rabbit

Isotype:

IgG

Applications:

ELISA, WB

Recommended dilutions:

ELISA:1:2000-1:10000, WB:1:500-1:1000

Protein Background:**Gene ID:**

HSP90AB1

Uniprot

P08238

Synonyms:

HS90B; HSP 84; HSP90-beta; HSP90AB1; HSPC2

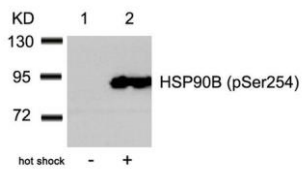
Immunogen:

Peptide sequence around phosphorylation site of serine 254 (V-G-S(p)-D-E) derived from Human HSP90B.

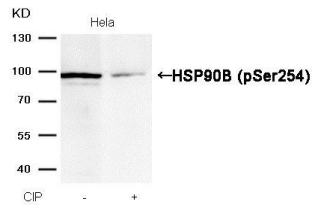
Storage:

Supplied at 1.0mg/mL in phosphate buffered saline (without Mg²⁺ and Ca²⁺), pH 7.4, 150mM NaCl, 0.02% sodium azide and 50% glycerol.

Product Images



Western blot analysis of extracts from HeLa cells untreated (lane 1) or treated with hot shock (lane 2) using HSP90B (Phospho-Ser254) Antibody.



Western blot analysis of extracts from HeLa cells, treated with calf intestinal phosphatase (CIP), using HSP90B (Phospho-Ser254) Antibody.