

# Phospho-MARCKS (Ser162) Antibody



PACO24316

---

## Product Information

**Size:**

100ul

**Reactivity:**

Human, Mouse, Rat

**Source:**

Rabbit

**Isotype:**

IgG

**Applications:**

ELISA, WB, IF

**Recommended dilutions:**

ELISA:1:2000-1:10000, WB:1:500-1:1000,  
IF:1:100-1:200

**Protein Background:**

MARCKS is the most prominent cellular substrate for protein kinase C. This protein binds calmodulin, actin, and synapsin. MARCKS is a filamentous (F) actin cross-linking protein.

**Gene ID:**

MARCKS

**Uniprot**

P29966

**Synonyms:**

MACS; MARCS; PKCSL; PRKCSL; Protein kinase C substrate

**Immunogen:**

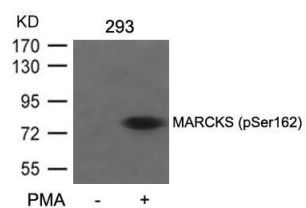
Peptide sequence around phosphorylation site of serine 162 (K-K-S(p)-F-K) derived from Human MARCKS.

**Storage:**

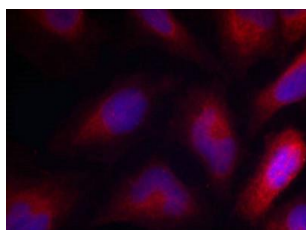
Supplied at 1.0mg/mL in phosphate buffered saline (without Mg<sup>2+</sup> and Ca<sup>2+</sup>), pH 7.4, 150mM NaCl, 0.02% sodium azide and 50% glycerol.

## Product Images

---



Western blot analysis of extracts from 293 cells untreated or treated with PMA using MARCKS(Phospho-Ser162) Antibody.



Immunofluorescence staining of methanol-fixed HeLa cells using MARCKS(Phospho-Ser162) Antibody.