

# Phospho-CAMK2A (Thr286) Antibody



PACO24322

---

## Product Information

**Size:**

100ul

**Reactivity:**

Human, Mouse, Rat

**Source:**

Rabbit

**Isotype:**

IgG

**Applications:**

ELISA, WB

**Recommended dilutions:**

ELISA:1:2000-1:10000, WB:1:500-1:1000

**Protein Background:****Gene ID:**

CAMK2A

**Uniprot**

Q9UQM7

**Synonyms:**

CAMKA

**Immunogen:**

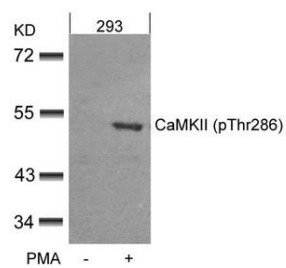
Peptide sequence around phosphorylation site of threonine 286 (Q-E-T(p)-V-D) derived from Human CaMKII.

**Storage:**

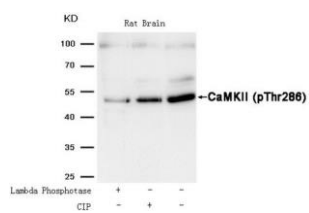
Supplied at 1.0mg/mL in phosphate buffered saline (without Mg<sup>2+</sup> and Ca<sup>2+</sup>), pH 7.4, 150mM NaCl, 0.02% sodium azide and 50% glycerol.

## Product Images

---



Western blot analysis of extracts from 293 cells untreated or treated with PMA using CaMKII(Phospho-Thr286) Antibody.



Western blot analysis of extracts from Rat brain tissue treated with Lambda Phosphatase or calf intestinal phosphatase (CIP), using CaMKII (Phospho-Thr286) Antibody.