

Phospho-PTPN11 (Tyr580) Antibody



PACO24333

Product Information

Size:

100ul

Reactivity:

Human, Mouse, Rat

Source:

Rabbit

Isotype:

IgG

Applications:

ELISA, WB, IHC

Recommended dilutions:

ELISA:1:2000-1:10000, WB:1:500-1:1000,
IHC:1:50-1:100

Protein Background:**Gene ID:**

PTPN11

Uniprot

Q06124

Synonyms:

PTN11; PTP-1D; PTP-2C; PTP2C; PTPN11

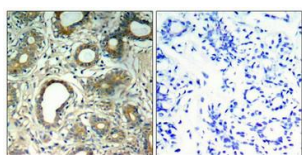
Immunogen:

Peptide sequence around phosphorylation site of tyrosine 580 (R-V-Y(p)-E-N) derived from Human SHP-2.

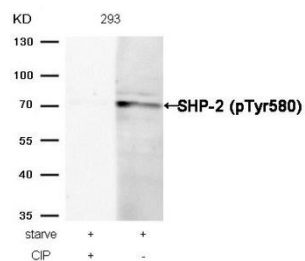
Storage:

Supplied at 1.0mg/mL in phosphate buffered saline (without Mg²⁺ and Ca²⁺), pH 7.4, 150mM NaCl, 0.02% sodium azide and 50% glycerol.

Product Images



Immunohistochemical analysis of paraffin-embedded human breast carcinoma tissue using SHP-2(Phospho-Tyr580) Antibody(left) or the same antibody preincubated with blocking peptide(right).



Western blot analysis of extracts from 293 cells, treated with starve or calf intestinal phosphatase (CIP), using SHP-2 (Phospho-Tyr580) Antibody.