

# Phospho-CTNNA1 (Ser641) Antibody



PACO24336

---

## Product Information

**Size:**

100ul

**Reactivity:**

Human, Mouse

**Source:**

Rabbit

**Isotype:**

IgG

**Applications:**

ELISA, WB

**Recommended dilutions:**

ELISA:1:2000-1:10000, WB:1:500-1:1000

**Protein Background:****Gene ID:**

CTNNA1

**Uniprot**

P35221

**Synonyms:**

Cadherin-associated protein; alpha E-catenin; NY-REN-13 antigen

**Immunogen:**

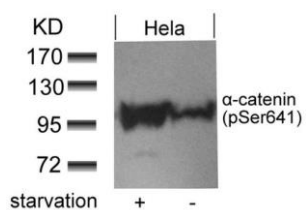
Peptide sequence around phosphorylation site of serine 641 (D-D-S(p)-D-F) derived from Human  $\alpha$ -catenin.

**Storage:**

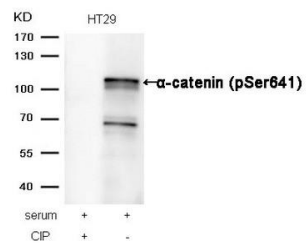
Supplied at 1.0mg/mL in phosphate buffered saline (without Mg<sup>2+</sup> and Ca<sup>2+</sup>), pH 7.4, 150mM NaCl, 0.02% sodium azide and 50% glycerol.

## Product Images

---



Western blot analysis of extracts from HeLa cells untreated or treated with starvation using alpha-catenin(Phospho-Ser641) antibody.



Western blot analysis of extracts from HT29 cells, treated with serum or calf intestinal phosphatase (CIP), using alpha -catenin (Phospho-Ser641) Antibody.