

# Phospho-CFL1/CFL2 (Tyr88) Antibody



PACO24337

---

## Product Information

**Size:**

100ul

**Reactivity:**

Human, Mouse

**Source:**

Rabbit

**Isotype:**

IgG

**Applications:**

ELISA, WB, IHC

**Recommended dilutions:**

ELISA:1:2000-1:10000, WB:1:500-1:1000,  
IHC:1:50-1:100

**Protein Background:**

Controls reversibly actin polymerization and depolymerization in a pH-sensitive manner. It has the ability to bind G- and F-actin in a 1:1 ratio of cofilin to actin. It is the major component of intranuclear and cytoplasmic actin rods.

**Gene ID:**

CFL1/CFL2

**Uniprot**

P23528/Q9Y281

**Synonyms:**

CFL1/CFL2

**Immunogen:**

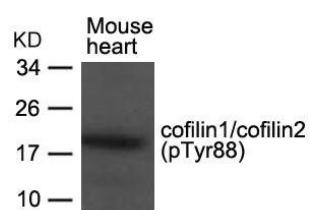
Peptide sequence around phosphorylation site of tyrosine 88 (A-T-Y(p)-E-T) derived from Human cofilin1/cofilin2.

**Storage:**

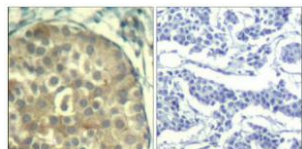
Supplied at 1.0mg/mL in phosphate buffered saline (without Mg<sup>2+</sup> and Ca<sup>2+</sup>), pH 7.4, 150mM NaCl, 0.02% sodium azide and 50% glycerol.

## Product Images

---



Western blot analysis of extracts from Mouse heart tissue using cofilin1/2(phospho-Tyr88) Antibody.



Immunohistochemical analysis of paraffin-embedded human breast carcinoma tissue using cofilin1/2(Phospho-Tyr88) Antibody(left) or the same antibody preincubated with blocking peptide(right).