

Phospho-PXN (Tyr88) Antibody



PACO24343

Product Information

Size:

100ul

Reactivity:

Human

Source:

Rabbit

Isotype:

IgG

Applications:

ELISA, WB, IF

Recommended dilutions:

ELISA:1:2000-1:10000, WB:1:500-1:1000,
IF:1:100-1:200

Protein Background:

An antiphosphotyrosine antibody was used to identify proteins that are phosphorylated in Rous sarcoma virus-transformed chick embryo fibroblasts, and a 76-kD protein was obtained that localizes to focal adhesions at the ends of actin-containing stress fibers in nontransformed cells (Ref.1). This protein was purified from chicken gizzard smooth muscle, and was named Pxn (Paxillin) ('paxillus' means 'small stake' or 'peg' in Latin) as a protein tethered to the membrane at focal adhesions.

Gene ID:

PXN

Uniprot

P49023

Synonyms:

PAXI; PXN;

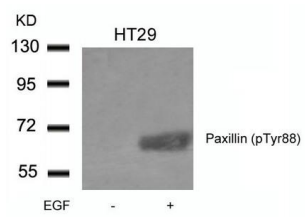
Immunogen:

Peptide sequence around phosphorylation site of tyrosine 88 (P-V-Y(p)-G-S) derived from Human Paxillin.

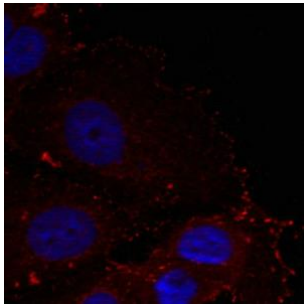
Storage:

Supplied at 1.0mg/mL in phosphate buffered saline (without Mg²⁺ and Ca²⁺), pH 7.4, 150mM NaCl, 0.02% sodium azide and 50% glycerol.

Product Images



Western blot analysis of extracts from HT29 cells untreated or treated with EGF using Paxillin(phospho-Tyr88) Antibody.



Immunofluorescence staining of methanol-fixed HeLa cells using Paxillin(phospho-Tyr88) Antibody.