

Phospho-CTNNB1 (Tyr333) Antibody



PACO24348

Product Information

Size:

100ul

Reactivity:

Human

Source:

Rabbit

Isotype:

IgG

Applications:

ELISA, WB, IHC

Recommended dilutions:

ELISA:1:2000-1:10000, WB:1:500-1:1000,
IHC:1:50-1:100

Protein Background:**Gene ID:**

CTNNB1

Uniprot

P35222

Synonyms:

CTNNB1; CATNB; CTNB1; CTNNB;

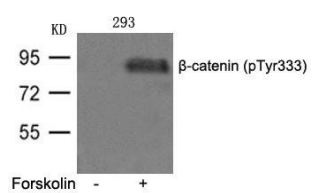
Immunogen:

Peptide sequence around phosphorylation site of tyrosine 333 (Y-T-Y(p)-E-K) derived from Human β -catenin.

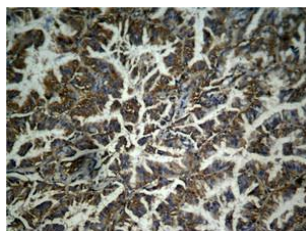
Storage:

Supplied at 1.0mg/mL in phosphate buffered saline (without Mg²⁺ and Ca²⁺), pH 7.4, 150mM NaCl, 0.02% sodium azide and 50% glycerol.

Product Images



Western blot analysis of extracts from 293 cells untreated or treated with FSK using β -catenin(phospho-Tyr333) Antibody.



Immunohistochemical analysis of paraffin-embedded human lung carcinoma tissue, using β -catenin (phospho-Tyr333) Antibody.