

# Di-Methyl-Histone H3 (Lys27) Antibody



PACO24350

---

## Product Information

**Size:**

100ul

**Reactivity:**

Human, Mouse, Rat

**Source:**

Rabbit

**Isotype:**

IgG

**Applications:**

ELISA, WB, IHC

**Recommended dilutions:**

ELISA:1:2000-1:10000, WB:1:500-1:1000,  
IHC:1:50-1:100

**Protein Background:**

**Gene ID:**

HIST1H3A

**Uniprot**

P68431

**Synonyms:**

H3/a, H3/c, H3/d, H3/f, H3/h

**Immunogen:**

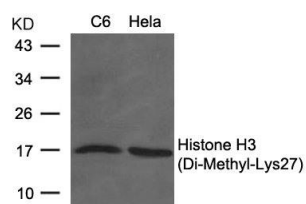
Peptide sequence around Di-Methylation site of lysine 27(A-R-K(di-methyl)-S-A) derived from Human Histone H3.

**Storage:**

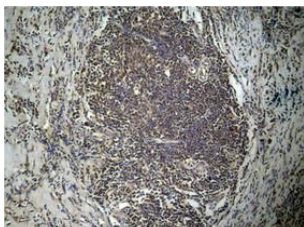
Supplied at 1.0mg/mL in phosphate buffered saline (without Mg<sup>2+</sup> and Ca<sup>2+</sup>), pH 7.4, 150mM NaCl, 0.02% sodium azide and 50% glycerol.

## Product Images

---



Western blot analysis of extracts from C6 and HeLa cells using Histone H3 (Di-Methyl-Lys27) Antibody.



Immunohistochemical analysis of paraffin-embedded human breast carcinoma tissue using Histone H3 (Di-Methyl-Lys27) Antibody.